

**Operating mode:**

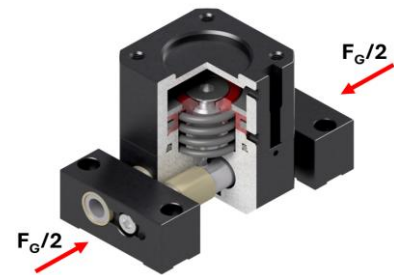
The double-acting cylinder is operated via pneum. compressed air and actuates the power unit. By two angularly arranged springs, which engage in the grooves of the bolts, the vertical is converted into horizontal movement.

**Advantages:**

- High life span
- Two stroke variants stroke 1 or stroke 2
- Mechanical interface according to DIN EN ISO 9409-12
- Low dead weight
- Optional gripping force safety device "opening" via pressure spring (7)
- Optional gripping force safety device "closing" via pressure spring (7)
- Depending on the mounting, gripping force safety device "closing" or "opening"
- Universal jaws (15) for easy mounting of specific fingers
- Piston position detection optionally via proximity switch ZG-RSGU01-300-M8



Technical specifications			GP063	
Gripping force at 6 bar	$F_G$ [N]	stroke 1	opening	1200
			shutting	1000
		stroke 2	opening	600
			shutting	500
Gripping force factor	$f_g$ [N/bar]	stroke 1	opening	200
			shutting	166
		stroke 2	opening	100
			shutting	83
Gripping force safety device	$F_S$ [N]	stroke 1	min.	500
			max.	760
		stroke 2	min.	250
			max.	380
System stroke per jaw	h [mm]	stroke 1	4	
		stroke 2	8	
Rec. component weight (stroke 1)	$m_w$ [kg]	5*		
Rec. component weight (stroke 2)	$m_w$ [kg]	10*		
Weight gripper	$m_g$ [kg]	0,4		
Operating pressure (with gripping force safety device)		5 ...6 bar		
Operating pressure (w/o gripping force safety device)		2 ...6 bar		
Air consumption per stroke	V [ccm]	10		
Air connection	$P_{max} = 10$ bar	M5		
Mounting flange	ISO	4 x M5 on $\varnothing 50$		
Operating temperature range [°C]		-30 to +120		
* This guideline applies to the following assumptions: force-locking, static friction coefficient: 0,2, operating pressure: 6 bar, double safety				



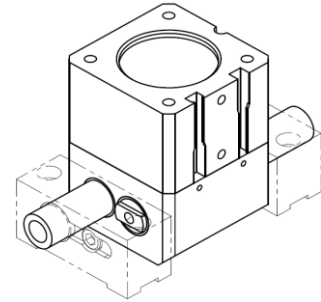
# G-GP063

Technical specifications



## Parallel gripper Ø63...

G-GP063-I1-GÖ	ISO-flange, stroke 1 gripping force safety device opening
G-GP063-I1-GS	ISO-flange, stroke 1 gripping force safety device shutting
G-GP063-I1-O	ISO-flange, stroke 1 without gripping force safety device
G-GP063-I2-GÖ	ISO-flange, stroke 2 gripping force safety device opening
G-GP063-I2-GS	ISO-flange, stroke 2 gripping force safety device shutting
G-GP063-I2-O	ISO-flange, stroke 2 without gripping force safety device

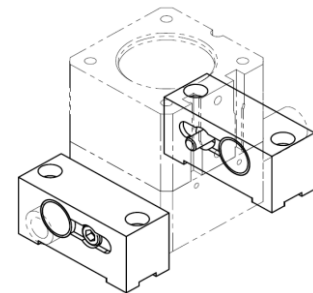


## Equipment GP

ZG-GP063-UB	Universal jaw for GP063 pair
ZG-RSGU-01	Signal transmitter with LED
ZG-RSGU01-300-M8	Signal transmitter with LED, with M8 plug

## Spare parts GG

EG-GG063-DS	Gasket set for gripper size 063
-------------	---------------------------------



Pos.	Description
1	Cylinder ISO
4	Magnetic ring
6	Cone
7	Compression spring
8	Power unit 1/2
11	Housing
13	Plain bearing bushing housing
14	Bolt 1/2
15	Universal jaw
16	Plain bearing bushing UB
17	Cylinder head screw UB

